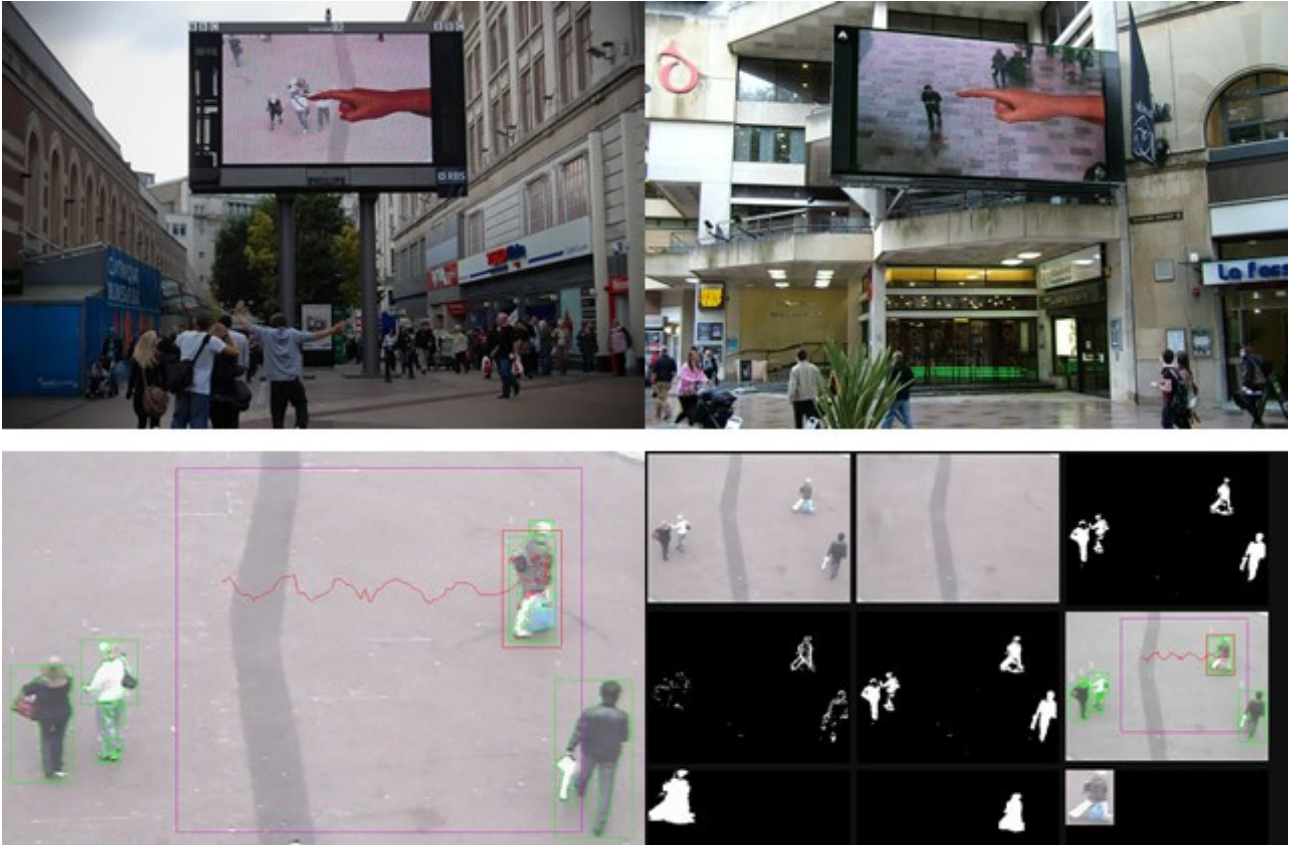


Hand from Above

Copyright © 2009 Chris O'Shea

Technical Rider

Introduction



Hand From Above encourages us to question our normal routine when we often find ourselves rushing from one destination to another. Inspired by Land of the Giants and Goliath, we are reminded of mythical stories by mischievously unleashing a giant hand from the BBC Big Screen. Passers by will be playfully transformed. What if humans weren't on top of the food chain?

Unsuspecting pedestrians will be randomly tickled, stretched, flicked or removed entirely in real-time by a giant deity. Actions change depending on how crowded the scene is or weather conditions.

Hand from Above is a joint co-commission between FACT: Foundation for Art & Creative Technology and Liverpool City Council for BBC Big Screen Liverpool and the Live Sites Network. It premiered during the inaugural Abandon Normal Devices Festival.

Video here : <http://www.chrisoshea.org/projects/hand-from-above/>

Spatial Requirements

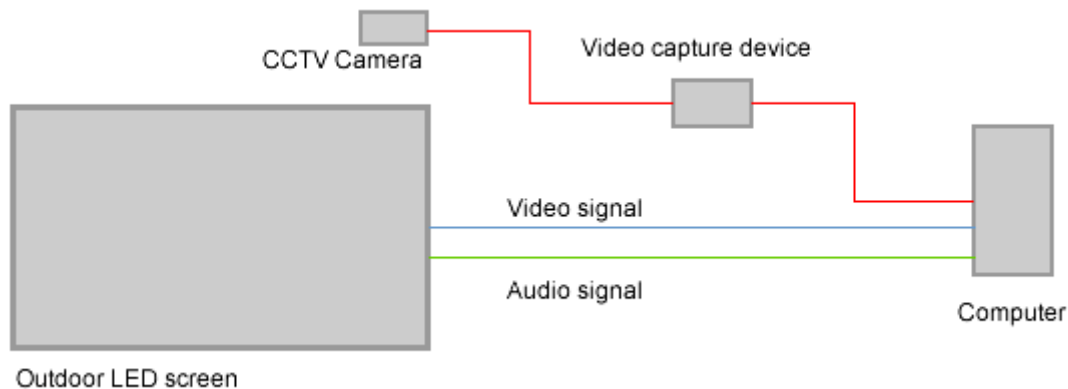
The piece was created for an outdoor screen in a busy public space. It is more suited to this environment, rather than in an indoor gallery, where the context changes.

It only works during daylight hours (due to camera tracking), so an LED screen works better over projection. The camera needs to be mounted high up looking down on pedestrians.

Hardware Requirements

Item	Description	Notes
Computer	1 GB RAM min. 2ghz processor. Sound output if desired. Video graphics card with OpenGL 2	
Computer Operating System	Windows XP	Ideally XP Pro, but Home or variations ok. Windows 95 or Vista not supported.
Display	Outdoor LED screen	Connected to computer output.
Sound	Audio speakers, normally built into LED screen	
Camera	CCTV	Best if can be controlled via web interface to set pan, tilt & zoom.
Video capture device	USB or PCI video grabber	The CCTV camera should either provide a composite video feed into a video capture device, or additional hardware that sits between.

Set-up Diagram



The set-up configuration will vary between sites, but this gives an overall view of the connections. Each screen site will normally have such a framework in place, so best to discuss with us the set-up first.

Delivery

Artist to provide the software based artwork, either remotely or on site to be decided. Support & assistance given for installation and operation of the software.

Hardware & set-up to be provided by exhibitor.